



OVERVIEW

22nd Century Technologies, Inc. (TSCTI) is a SBA Certified 8(A) Small Disadvantage Business with innovative approach to provide IT services and solutions to Federal, State, Local government agencies and fortune listed companies. For last 14 years, we are committed to our clients for providing exceptional competence, quality & commitment on projects involving Web and application development, SharePoint, Documentum, IT Support, Help Desk and other IT consulting services.

KEY INFORMATION

- ▶ Corp. Office : 8300 Greensboro Dr, Suite No 285
Mclean, VA 22102
- ▶ Toll Free Contact : 800 517 8408
- ▶ E-mail : aboutus@tscti.com
- ▶ DUNS : 028619588
- ▶ Cage Code : 3DYY9
- ▶ NAIC : 541511, 541512, 541513, 541519, 518210
- ▶ Contract Vehicles
 - GSA Schedule 70 Contract # GS35F0579T
 - SeaPort-e
 - FAA - eFast
 - 8(a) STARS II
 - US Senate SharePoint Integrators IDIQ
 - Department of Labor BPA for Microsoft consulting
 - NIH BPA # HHSN263201000063B

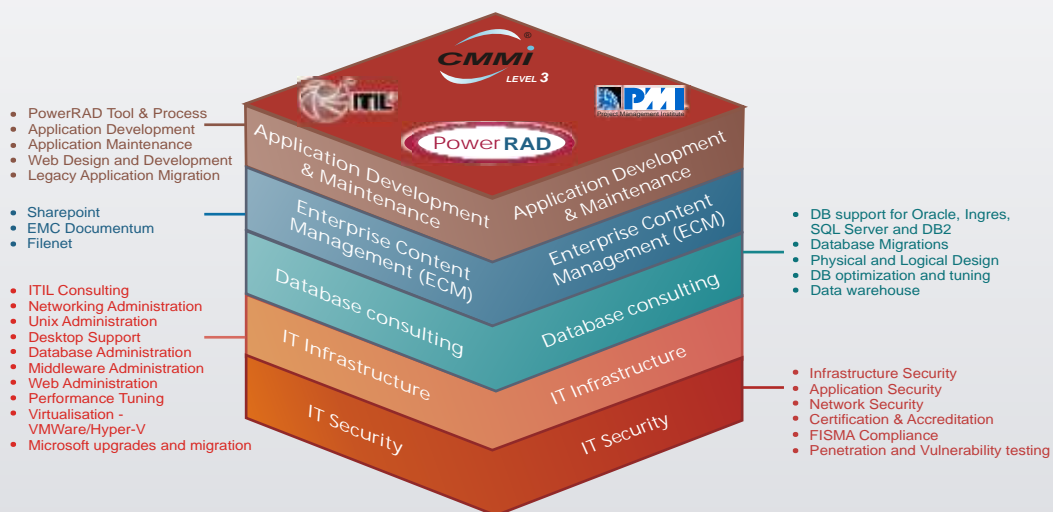
QUICK FACTS

- ▶ Founded in 1997
- ▶ SBA Certified 8(A) / SDB
- ▶ Presence in 33 states
- ▶ CMMI 3 certified
- ▶ 90+ Federal, State and Local government Contract vehicles
- ▶ MBE in 20+ States
- ▶ D&B Score
 - Financial Rating - 80
 - Open Rating (Customer Satisfaction) - 95
- ▶ Awards
 - CRN 100 fast growth
 - Inc. fastest growing
 - Software Magazine fastest growing

OUR PRODUCTS

- ▶ Secure One™ - Identity Management Solution
- ▶ Producer One™ - Agency Sales Channel
- ▶ Loss One™ - Insurance Claim Management
- ▶ RIPS - RFP Information Portal Solution
- ▶ Time Management Solution
- ▶ SharePoint - Outlook integration
- ▶ SharePoint - Video Conferencing integration
- ▶ SharePoint - Documentum Integration

OUR SERVICES



CERTIFICATION / PARTNERSHIPS





CORE COMPETENCIES

Services	Work Performed	Clients
Application Development & Maintenance	<ul style="list-style-type: none"> • C# .Net • J2EE • Web designing and development • Migration -Power Builder to .Net/Java, Forte to Java • Legacy migration • Application Maintenance • PowerRAD 	<ul style="list-style-type: none"> • Internal Revenue Service (IRS)-CI • National Institute of Health • US Department of Interior • US Army • State of Washington • State of North Carolina • State of Montana • United Nation • State of South Carolina • State of Maryland
Enterprise Content Management (ECM)	<ul style="list-style-type: none"> • Sharepoint customization and Implementations • MOSS 2010 upgrades • Sharepoint-Documentum integration • Documentum Implementation • Documentum Integration with SAP • FileNet implementation 	<ul style="list-style-type: none"> • National Institute of Health • US Department of Labor • Federal Trade Commission • US Department of Interior • State of West Virginia • State of Florida • Internal Revenue Service (IRS)
IT Infrastructure and Help Desk Support	<ul style="list-style-type: none"> • ITIL Consulting • MS Windows Support • Desktop Support • Help Desk • Networking Administration • Unix Administration • Middleware Administration • Web Administration • Performance Tuning 	<ul style="list-style-type: none"> • US Navy • US Department of Labor • US Department of Interior • Social Security Administration • United Nations • WSSC • County of West Palm Beach Florida • Federal Trade Commission • State of Texas, NC and SC
Microsoft Consulting	<ul style="list-style-type: none"> • Windows Environment setup, upgrade with Virtualization • Exchange 2003 to 2007 migration • Sharepoint Setup, administration and migration • MS Office migration • SQL Server upgrade • SCCM & SCOM • Excel to MS Access conversion 	<ul style="list-style-type: none"> • US Department of Labor • Federal Trade Commission • OST Global • State of Washington • State of North Carolina • State of South Carolina • US Army • Naval Medical Center
Database Consulting	<ul style="list-style-type: none"> • DB support for Oracle, Ingres, SQL Server and DB2 • Database Migrations • Physical and Logical Design • DB optimization and tuning • Data warehouse 	<ul style="list-style-type: none"> • US Army • Department of Veteran Affairs • Department of Labor • State of Mississippi • OST Global • National Institute of Health as sub to SRA • State of Washington • State of North Carolina • State of South Carolina • State of Montana
Security Services	<ul style="list-style-type: none"> • Infrastructure Security • Application and Enterprise Security-Product- • IMS (SecureOne) • Active Directory Review 	<ul style="list-style-type: none"> • Dept of Transportation - State of WA • State of Washington • State of NC • NJ Dept of Judiciary • Amdocs • Tohono O'odham Ki-Ki Association

SAMPLE CURRENT AND PAST PERFORMANCE

- ▶ Sharepoint Portal for US Department of Labor
- ▶ Sharepoint Portal for Federal Trade Commission
- ▶ Sharepoint implementation and support at NIH multiple IC
- ▶ Web Catalog System for NIH
- ▶ BMC implementation for Department of Justice
- ▶ Application Operation and Maintenance for Naval Medical
- ▶ Statewide ITILAssessmentforStateof WA
- ▶ Developed Web Portal site based on MOSS for IRS CI
- ▶ Develop web-based application - criminal investigation (CIMIS) for IRS-CI-Department of Treasury
- ▶ SCCM/SCOM Implementation for DOL
- ▶ Develop web based application for Tax collector for Palm Beach County, State of Florida
- ▶ Oracle HRMS implementation for Williamson County, TX
- ▶ Setting-up Broadband Wireless network for Palm Beach County, State of Florida
- ▶ Develop web based application for Department of Labor- State of Washington
- ▶ Implementation of Case Management System using Documentum for IRS - CI - Department of Treasury
- ▶ Helpdesk support for WSSC to support 1300 IT users in 7 locations
- ▶ GIS and web development support to City of Phoenix Aviation depart.
- ▶ Provide information security for ESD, State of WA
- ▶ Upgrade SAP4.7E to SAP ECC6.0
- ▶ Integrate Documentum with SAP for SMUD
- ▶ Desktop and Help Desk support at United Nation
- ▶ Help desk and network support at US Department of Labor



SHAREPOINT CONSULTING SERVICES

OMB Promoting Transparency in Government

Collaboration improves the effectiveness of government by encouraging partnerships and cooperation within the federal government, across levels of government, and between the government and private institutions

TSCTI has strong competencies in developing solutions using Microsoft SharePoint 2010, Microsoft Office SharePoint Server 2007 (MOSS) and Windows SharePoint Services 3.0 (WSS). With a dedicated Center of Excellence (CoE) we help our customers develop and deploy SharePoint solutions including intranets, workflows, collaboration, departmental solutions, dashboards and custom portals. Our Center of Excellence carries out prototypes and designs in order to develop best practices and to bring our clients the best SharePoint based solutions possible.

- ▶ We help you reduce your SharePoint project risk by employing our proven methodology structure and industry best practices.
- ▶ We are committed to SharePoint for the long term. We use it for our own processes and have invested in a center of excellence, having automated our customer service, Proposal Management, Procurement, CRM, HR, Time Accounting, Admin Processes and Executive Dashboards.
- ▶ We offer professional services; including Consulting, Quick start Services, Custom Development Services and Solutions, SharePoint Installation and Diagnostic and Post-Implementation Training, Maintenance and Support, for SharePoint 2010 Servers, Microsoft Office SharePoint Server 2007 and Windows SharePoint Servers 3.0.



CAPABILITY MATRIX																				
SERVICES	CUSTOMERS									FEATURES	CUSTOMERS									
	1	2	3	4	5	6	7	8	9		1	2	3	4	5	6	7	8	9	
Installation & Configuration	●		●			●		●	●	Content Management	●	●	●	●	●	●			●	●
Governance Plan & Taxonomy		●	●						●	Record Management		●	●							
Migration (WSS 2007 2010)					●				●	Forms Management	●		●	●	●	●	●	●	●	●
Integration-Outlook/Documentum	●	●	●	●		●		●	●	Excel Services			●	●						●
Architecture & Capacity Planning	●		●		●	●	●	●		Workflow Automation	●	●	●	●	●	●	●	●	●	●
SharePoint (24x7) Tier Support	●	●		●					●	Business Data Catalog				●						
Performance & Optimization	●	●	●					●	●	KM - (WIKI and Blogs)		●	●	●	●					●
SharePoint Security	●	●	●			●		●	●	BI - (Dashboard and KPI)	●	●		●	●					
Compliance FIIPS and 508		●	●	●	●					Enterprise Search	●	●	●		●	●	●	●	●	●
SharePoint Test Lab	●	●	●					●	●	Business Connectivity Service				●						●

- 1 Department of Labor
- 2 National Institute of Health
- 3 Federal Trade Commission
- 4 US – Deptt. of Agriculture
- 5 US – Navy
- 6 Deptt. of Interiors
- 7 State of Vermont
- 8 American Express
- 9 Majestic Insurance

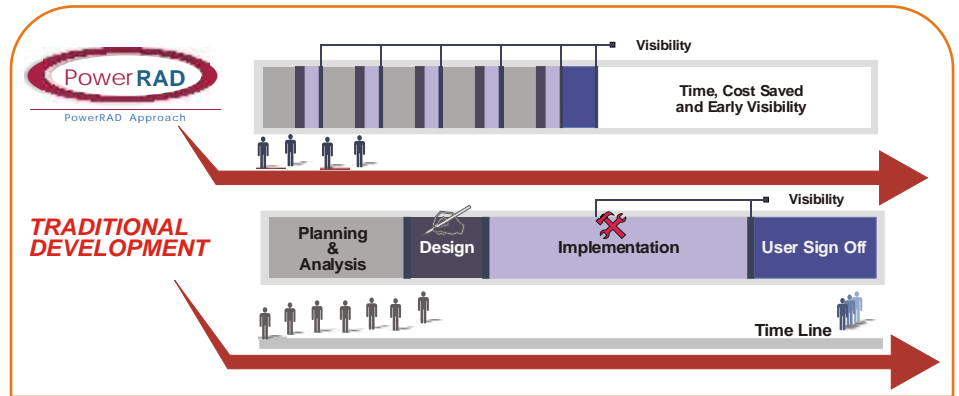




TSCTI INNOVATIVE DEVELOPMENT METHODOLOGY - POWERRAD

In a traditional SDLC, a lot of time and resources are spent in gathering resources, endless documentation, marathon meetings and inadequate communication. This leads to an unproductive and a high-maintenance. Software engineering principles have proven that a well-designed system reduces the number of defects and improves the overall quality of application.

We have well proved and unique Rapid Application Development model for our customer engagements, called the PowerRAD Approach. This process uses fewer resources and provides early visibility. The PowerRAD is a well-controlled, platform independent system, ensuring increased ROI and reduced TCO



HOW IT WORKS

- ▶ Input Requirements, Use Case, Data Model, HTML & CSS into PowerRAD
- ▶ Generate Working Prototype (80% Deployment Ready-System)
- ▶ Generate Project Artifacts (CMMi Level 3 Compliant)

- ▶ Check-in generated code and Project Artifacts into CM Tool
- ▶ Enhance & Optimize the system to meet the look and feel requirements (UAT Ready)
- ▶ Deploy System

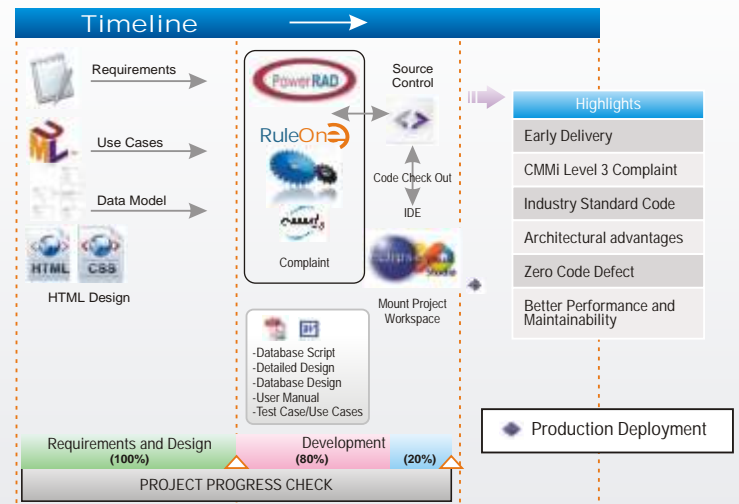
SUCCESS STORIES

Government

- ▶ Department of Labor
 - DRVS System (New Development)

Commercial

- ▶ OneBeacon Insurance
 - @work (Forte to Java)
 - @vantage (Cobol to Java)
- ▶ Science First
 - eRoadMap (New Development)
- ▶ Everest Insurance
 - ProduceOne (Software Product)
- ▶ Navigator
 - SecureOne (Software Product)



BUSINESS BENEFITS

- ▶ Early visibility at every stage
- ▶ Reduced TCO (Total Cost of Ownership)
- ▶ Platform-Independent model (PIM) with a very long lifespan
- ▶ Reduced communication gaps
- ▶ Easier maintenance, improved quality and development productivity
- ▶ Protection of intellectual capital
- ▶ Process and compliance oriented
- ▶ Better quality and ROI

TECHNOLOGY BENEFITS

- ▶ Reduction of development time
- ▶ Architectural advantages improving code consistency and maintainability
- ▶ Increased portability across middleware vendors
- ▶ Better performance and maintainability
- ▶ Regeneration of large portion of code for any new platform target
- ▶ Better communication between developers using different tools and technologies
- ▶ Documentation and design always in synch



APPLICATION SUSTAINABILITY

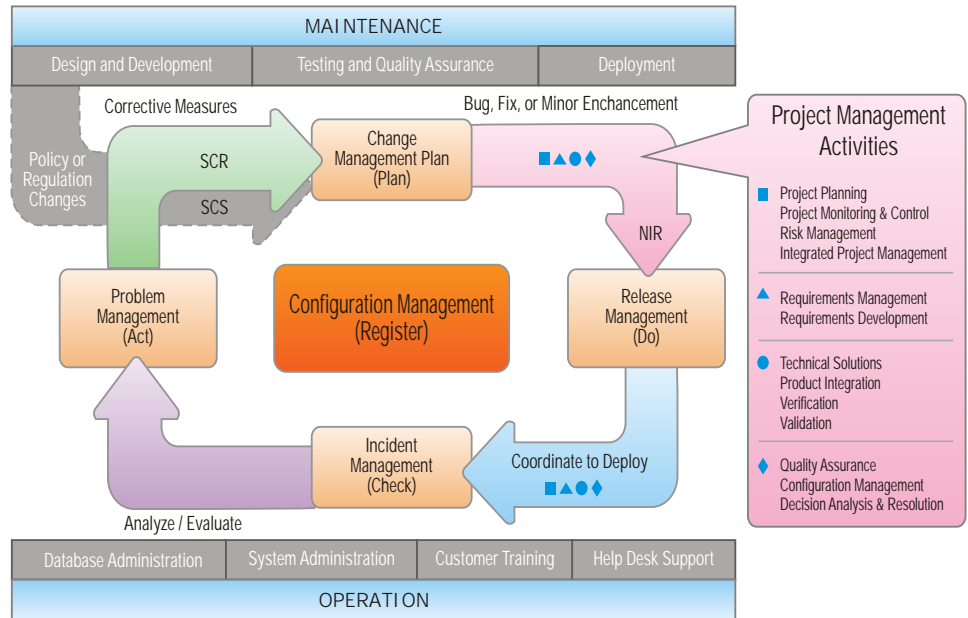
We have proven processes to manage large scale O&M projects for federal as well as state agencies which includes the Federal Aviation Administration, the Internal Revenue Service, National Institute of Health, Departments of Veteran Affairs, and Labor & Industries for State of Washington.

SYSTEM MAINTENANCE

- ▶ Developing & Maintaining Software Components
- ▶ Data & Interface Management
- ▶ Change Management
- ▶ Incident Management
- ▶ Problem Management
- ▶ System Integration
- ▶ Testing & Quality Assurance
- ▶ Requirement Management

SYSTEM OPERATION

- ▶ Database Administration Support
- ▶ System Administration Support
- ▶ Help Desk Support
- ▶ Customer Training



CASE STUDIES

<p>Internal Revenue Service's- Criminal Investigation Management Information system</p>	<ul style="list-style-type: none"> ▶ Design & Development ▶ Configuration Management ▶ Release Management ▶ Quality Assurance ▶ Help Desk- Tier-3 Support
<p>Department of Veteran Affairs- Health Administration Center- Oracle Database Support</p>	<ul style="list-style-type: none"> ▶ Database Administration Support ▶ System Administration Support
<p>National Institute of Health- NCCAM- Grant Management System</p>	<ul style="list-style-type: none"> ▶ Requirement Management ▶ System Design & Development ▶ System Integration ▶ System Testing
<p>Department of Labor & Industries- State of WA- Self Insurance Electronic Data Reporting System (SIEDRS)</p>	<ul style="list-style-type: none"> ▶ Requirement Management ▶ System Design & Development ▶ Configuration Management ▶ Release Management

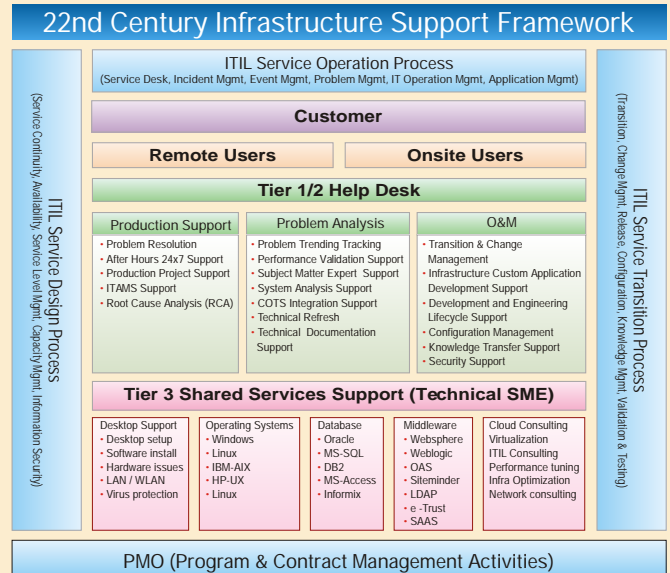


INFRASTRUCTURE SERVICES

Managing Infrastructure Technologies

As organizations increasingly strive for high performance, chief information officers are turning to IT Infrastructure Services to advance strategic objectives such as cost saving, operational efficiency and delivering IT-enabled business innovation. TSCTI IT strategy and architecture services are designed to give you insight into the state of your IT infrastructure, so you can identify opportunities for added efficiency, business value and growth and create a roadmap of clearly defined steps to improvement.

TSCTI provide customized consulting services covering the entire cycle of "Strategy, Architecture, Deploy, Migrate and Manage" of your Infrastructure. TSCTI takes a collaborative approach to helping you implement and manage infrastructure solutions on a 24x7 basis, ensuring high availability and performance to enable better business value through reduced Total Cost of Ownership (TCO).



Core Competencies Include

▶ IT Service Management

- ITIL Maturity Assessment
- ITIL Process Consulting & Implementation (Service Desk, Change Management, CMDB, etc.)
- IT Strategy, Analysis & Design

▶ Application Management

- Database Management (Oracle, DB2, SQL)
- Middleware Support (BEA Weblogic, Tuxedo, IBM WebSphere products)
- Performance Tuning (J2EE Apps, Databases, Unix Systems, Storage and network)
- SOA/EAI Support (Web Services, ESB, SAML, Federation Services)

▶ Business Continuity Management

- 24x7 Solution Design & Development
- Backup, Recovering & Archiving
- Disaster Recovery Process Design & Development

▶ Managed Services

- Total Management of Infrastructure (outsource & insource)
- Remote, Oncall, Onsite 24 X 7 Support
- Asset Management
- Vendor Management

▶ Microsoft Consulting

- Install, configure and support of Microsoft Technologies
- Exchange Migrations
- Sharepoint administration and migration
- SCCM & SCOM consulting and implementation

▶ Infrastructure Optimization

- Cloud Computing
- Infrastructure Sizing and Capacity Planning
- Server Consolidation
- IT Services (Middleware, J2EE Apps, Batch Processes) Consolidation
- Virtualization

▶ Infrastructure Management

- Data Center Services
 - Systems and Server Management (HP-UX, AIX, VMS and Solaris)
 - Storage Management (EMC, Hitachi, IBM, HP and Net Apps)
 - Network Services (Switches, Routers, Load balancers etc.)
- Desktop Services
 - Desktop Management (S/W Distrib, Patches, Account Management)
 - Accelerated Deployment, OS (Windows, Unix) Admn .
- IT Security
 - SAS 70 Audit
 - SOX Compliance Audit
 - PEN testing for J2EE Apps

TSCTI Advantage

- ▶ Team consists of certified ITIL professionals
- ▶ Many successful implementations with State and Federal government agencies
- ▶ Extensive multi-vendor, multi-platform expertise in heterogeneous environments
- ▶ Partnership with major technology vendors



MICROSOFT CONSULTING SERVICES

Our Expertise

- ▶ Architect and Planning
- ▶ MOSS / Sharepoint
- ▶ Infrastructure
- ▶ Application development
- ▶ Microsoft CRM
- ▶ DW / BI
- ▶ User Training

Our Differentiator

- ▶ Microsoft Gold Partner
- ▶ More than 70% revenue from Microsoft Technologies services
- ▶ More than 70% employees Microsoft Skilled
- ▶ Team includes around 50 Microsoft Certified Professionals

Infrastructure

- ▶ **OIG, US Department of Labor**
 - Windows 2003/ 2008 setup
 - MOSS 2007 Installation and configuration
 - SCCM installation and setup for 40 users
 - SCOM setup with management of MS infrastructure including Server 2003 / Server 2008, Exchange, SQL Server and Sharepoint
 - User training on SCCM, SCOM

Naval Hospital

- Installation, Configuration and maintenance of over 200 MOSS sites
- Windows 2003 / 2008 support
- Active Directory and Exchange support

OST for FEMA and DHS

- Installation, Configuration & maintenance of 300+ sites
- Migration to new distributed & HA Infrastructure with DRP
- Design and implementation of Exchange 2003 to 2007 Migration with HA and DR
- SCOM implementation for over 50 servers and 500 users with Server 2003 / 2008, AD, Exchange, SQL Server and MOSS and DR site
- SCCM implementation
- Training on SCCM, SCOM and MOSS

Washington State - DOT and ESD

- SQL Server Administration

Application Development

- ▶ **Nation Institute of Health - US Department of Health**
 - Implementation of .Net based Catalog System to be integrated with Oracle ERP
- ▶ **Criminal Investigation- Internal Revenue Services**
 - CIMS Case Management System using C# / .Net
- ▶ **Washington State Department of Labor and Industry**
 - Multiple C# / .net based project with revenue over \$1M
- ▶ **Washington State Department of Licensing**
 - Multiple C# / .net based project
- ▶ **Washington State Department of Transport**
 - Multiple C# / .net based project
- ▶ **City of Phoenix**
 - .net projects with integration to GIS for Aviation Department
- ▶ **State of Montana**
 - MS Access and .net based web development
- ▶ **Palm Beach County, FL**
 - Multiple C# / .net / VB.net projects

Microsoft CRM

- ▶ **Catlin Specialty Insurance**
- ▶ **Outline Systems - Insurance Focused Company**
- ▶ **Ramada Inn - Idaho**
- ▶ **Days Inn - Utah**

Training

- ▶ **OIG, US Department of Labor**
 - Training on SCCM, SCOM and MOSS
- ▶ **OST for FEMA and DHS**
 - Training on SCCM, SCOM, MOSS, Exchange Migration
- ▶ **Federal trade Commission**
 - Training on MOSS

DW / BI

- ▶ **Ohio Public Employees Retirement System**
- ▶ **State of Texas - TAE**
- ▶ **Washington State Department of Transport**
- ▶ **Washington State Employment Security Department**

Sharepoint Services

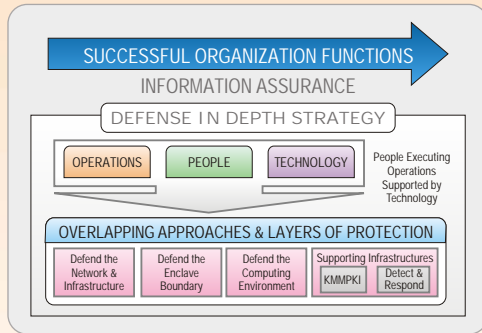
- ▶ **Department of Labor**
- ▶ **National Institute of Health**
- ▶ **Federal Trade Commission**



SECURITY SERVICES

TSCTI Defense-in-Depth Strategy

22nd Century Team has implemented well defined IA and IT security strategy based on Department of Defense (DoD) strategy, called Defense-in-Depth, to achieve an



effective IA posture for IT infrastructure projects. The underlying principles of this strategy are applicable to any information system or network, regardless of organization.

Application and Enterprise security

TSCTI has vast experience helping and implementing application and enterprise security for large government and commercial clients including State of Washington, State Street Insurance, Erie Insurance and Everest Insurance.

▶ TSCTI has its own COTS for Identity and Access Management named SecureOne™

- SecureOne™ has following features:
 - User Provisioning
 - Delegated provisioning model
 - Password Management
 - Audit and Compliance reporting
 - User Self Service
 - Role Based Access Control

Large scale implementation of Identity and Access Management projects with following features:

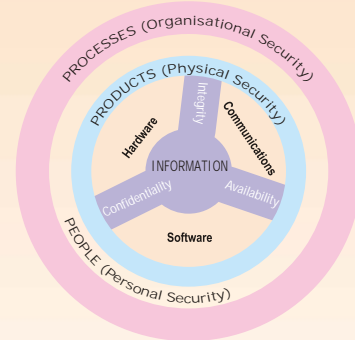
- Federated single sign-on
- Enterprise Identity and Access Management architecture design
- Internal employee security
- Public user enrollment and security
- Role based access control
- Provisioning system
- Password management

Compliance experience

- Identity and Access management compliance
- SOX compliance
- GLB compliance
- Certification & Accreditation (C&A) services

TSCTI Information Assurance (IA) Framework “CIA”

22nd Century Team has implemented well defined IA and IT security strategy based on Department of Defense (DoD) strategy, called Defense-in-Depth, to achieve an



effective IA posture for IT infrastructure projects. The underlying principles of this strategy are applicable to any information system or network, regardless of organization.

Infrastructure security

TSCTI has experience helping and implementing Information security at infrastructure level for large commercial and government clients including NIH, State of Washington, State of New Jersey, Palm Beach County, Amdocs and Sprint.

▶ Our range of Information Security services include:

- Integrated Enterprise Security Solutions
- Enterprise Security Assessment/Security Maturity Assessment at Infrastructure level
- Security Architecture & Design
- Security Policy Development & Deployment
- FISMA / NIST /BS7799/ISO17799 Consulting & Implementation
- SOX and PCI compliance consulting
- SAS70 consulting
- Disaster Recovery and contingency Planning
- Physical Access Control Solutions
- Network Security Audits, Assessment and Hardening Services
- Wireless LAN Security, Firewall Services & Consulting
- Intrusion Detection/Prevention Services
- Vulnerability testing
- OS level security implementations for both Unix and Windows platforms
- Host-based Penetration Testing
- Certification & Accreditation (C&A) services